



# ADVANCE DELIVERY CONSULTING

ONE OF THE FASTEST GROWING DIGITAL TRANSFORMATION AND  
DATA CONSULTANCY FIRMS IN THE ASIA PACIFIC

AUSTRALIA | INDIA | SINGAPORE | UAE



Confidential and Proprietary Information of ADC – For Authorised Recipients Only

## ADC: COMPANY OVERVIEW



**We are a leading IT consulting firm with a presence across Australia, APAC and the Middle East.**

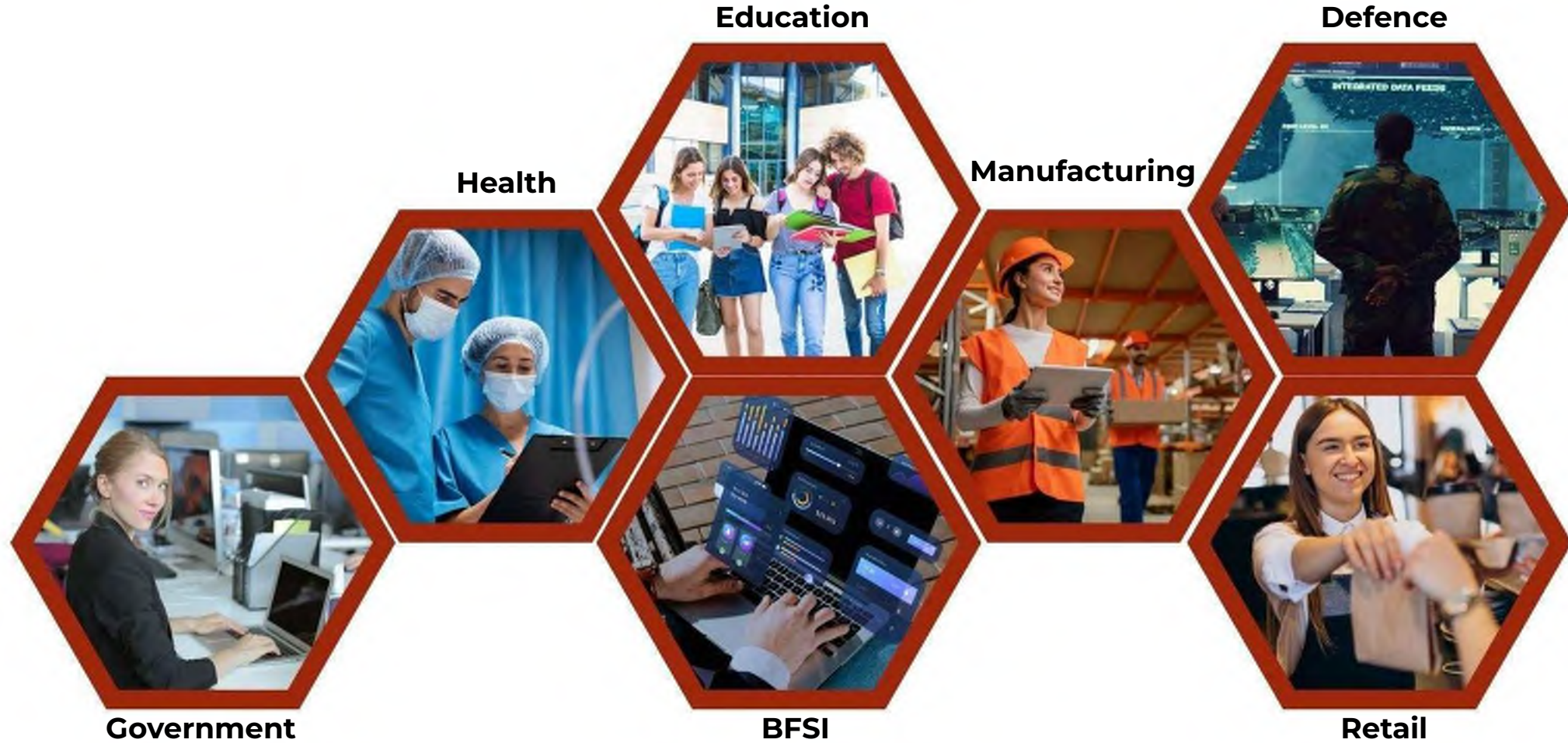
- **Funding and Growth:** Backed by private wealth and equity funding, ADC has supported acquisitions in Australia, India and the Middle East, allowing the firm to offer transformative technology solutions.
- **Market Leadership:** Leveraging deep industry expertise and a focus on innovative technology, ADC drives change across sectors, including government / public and defence, by delivering comprehensive, scalable IT solutions.





# INDUSTRIES WE SERVE

ADC's diverse portfolio and expertise drive digital transformations across sectors, shaping the global digital landscape and delivering value to businesses worldwide.





# OUR SERVICES



## End-to-End Data Services



Transform data into actionable insights, driving informed decision-making and enhancing the overall efficiency of your business operations

## Digital Transformation Programs



Leverage data as an asset and revolutionise your technology approach, ensuring agility and resilience in the ever-evolving digital landscape

## Testing Services



Ensure flawless performance and user experience with ADC's rigorous testing services – your assurance of quality from functionality to security

## Integration Services



Unify your diverse IT landscape, streamline processes; enhance collaboration across your organisation, fostering a more agile and responsive business

## Cloud Platform Solutions



Embrace the scalability, flexibility and security of cloud technology, enabling you to innovate rapidly, reduce costs and stay ahead in today's dynamic and competitive market



# OUR STRATEGIC PARTNERS – POWERING EXCELLENCE TOGETHER



## Talent Resources Consulting

### Empowering HR Excellence

**Across Regions:** With offices in Australia, India, and Singapore, TRC specializes in HR and Payroll managed services, recruitment strategies and seamless HR portfolio management.

**Core Focus Areas:** Retail, manufacturing, healthcare and SMBs.

**Expertise Highlights:** Time and cost savings through HR outsourcing, deep human capital insights and digital transformation.



## T3 Workforce

### Revolutionising Workforce

**Management:** A future-ready platform powered by generative AI for strategic workforce planning and real-time scheduling.

**Capabilities:** Predictive skills demand, strategic reskilling, operational modeling, and advanced analytics.

**Efficiency Delivered:** \$12.24 ROI for every \$1 invested, real-time attendance integration, and seamless workforce scheduling.



## Energy Capital Global

### Advancing Solar and Energy Storage Solutions:

Australia-based experts in Solar and BESS, serving energy-intensive sectors like data centres, aged care, agriculture and education.

**Solutions That Perform:** Tailored renewable energy systems with flexible financing options and comprehensive project management.

**Mission:** Driving sustainability as an opportunity for growth and energy independence.



## SCx Solutions

### Energy-Efficient Innovations:

Leaders in optimizing energy efficiency for built environment, industrial equipment and clean energy sectors.

**Core Technology:** Simulation-driven solutions leveraging Computational Fluid Dynamics.

**Collaborative Reach:** SCx is aligned with Hexagon, whose defense solutions support mission-critical military operations, real-time situational awareness and advanced weapons systems.

# 2024: Milestones That Set the Stage for Growth

## GLOBAL EXPANSION

The acquisition of CirroDX in Dubai amplified our Salesforce practice, reinforcing our international presence.

## REGIONAL STRENGTH

Offices in Jeddah and Riyadh sharpened our Middle East footprint, positioning us to serve an even wider client base.

## SECTOR LEADERSHIP

Our work on the Civica PHI platform and partnerships with key funds fuelled impactful outcomes across health, education and insurance sectors.

## CUTTING-EDGE TECHNOLOGY

Strategic partnerships positioned us as a key player in Next-Gen Computational Fluid Dynamics (CFD) and digital twin solutions.

## Vision 2025

COMES WITH A PROMISE OF PUSHING BOUNDARIES, REDEFINING POSSIBILITIES AND CONTINUING TO BUILD SOMETHING EXCEPTIONAL.

- **Partnership Introduction:** ADC and SCx Solutions are joining forces to bring Hexagon's Cradle CFD software suite to emerging markets in Australia, Southeast Asia and the Middle East.
- **Setting the Stage:** Together, we aim to tackle complex challenges in urban development, defence and beyond through cutting-edge fluid dynamics and thermal simulation technologies.
- **Core Offering:** By integrating SCx's technical expertise with ADC's market access capabilities, we are committed to empowering critical missions and shaping a secure, sustainable future.





# THE POWER OF CRADLE CFD

## Revolutionising Urban and Defence Solutions with Cradle CFD



### Unmatched Capabilities

- High-resolution simulations for urban planning and heat management
- Advanced turbulence models (LES and RANS) for detailed airflow and thermal analyses
- Heat transfer and radiation modeling for assessing material and energy interactions

### Applications Across Sectors

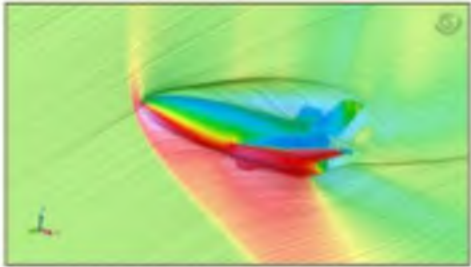
- **Urban Heat Mitigation:** Design cooler cities with green infrastructure and efficient layouts
- **Defence Optimisation:** Enhance thermal and aerodynamic performance in vehicles, bases and operational setups
- **Infrastructure Planning:** Optimise energy efficiency for critical sectors like education, defence and healthcare



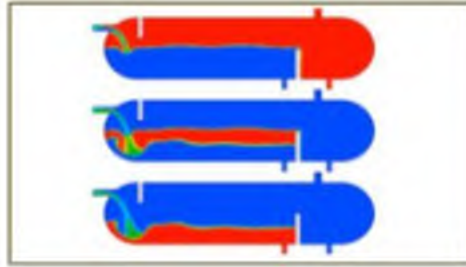
# CRADLE CFD TOUCHES EVERY INDUSTRY SECTOR



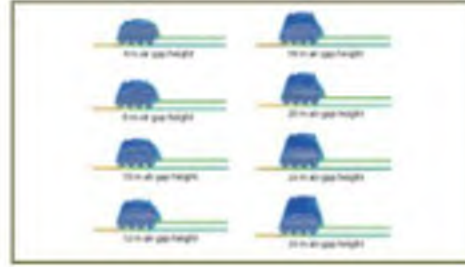
Aerospace & Defence



Chemical Processing



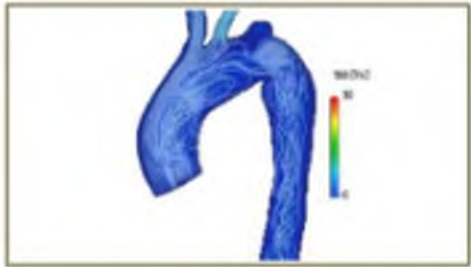
Mining & Materials



Marine + Oil & Gas



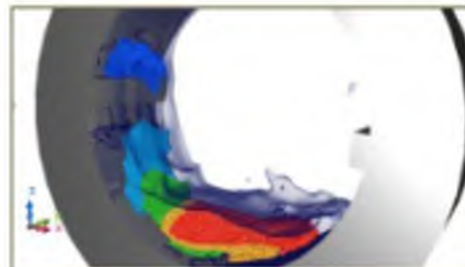
Life Sciences



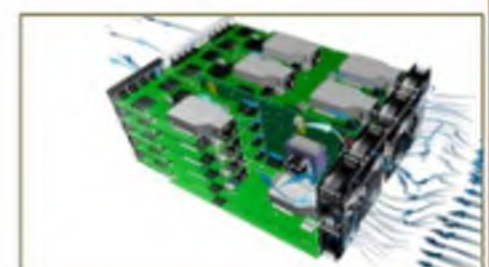
Heavy Manufacturing



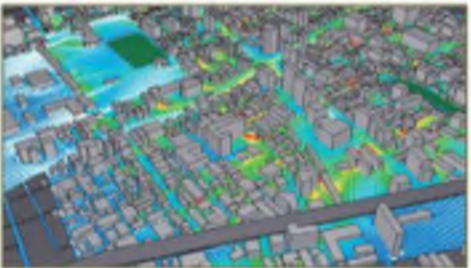
Consumer Goods



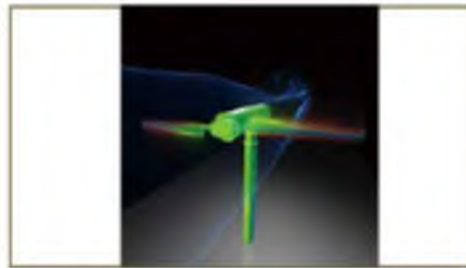
Electronics



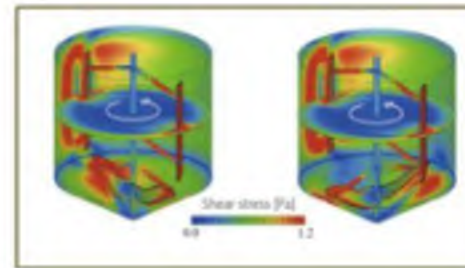
Built Environment



Energy & Power Generation



Food & Beverage



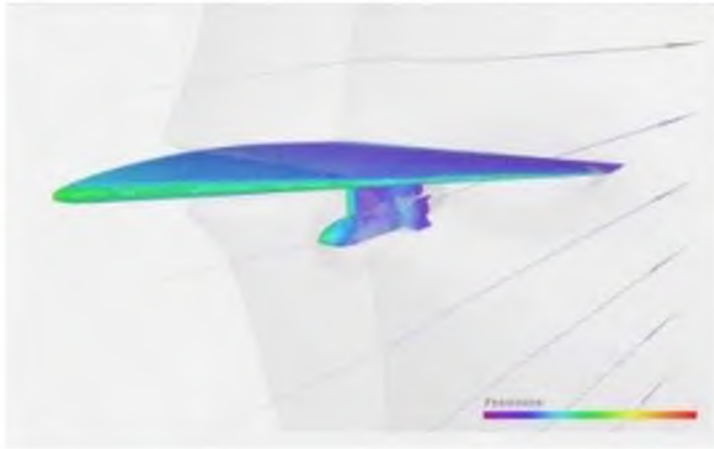
Automotive & Transportation



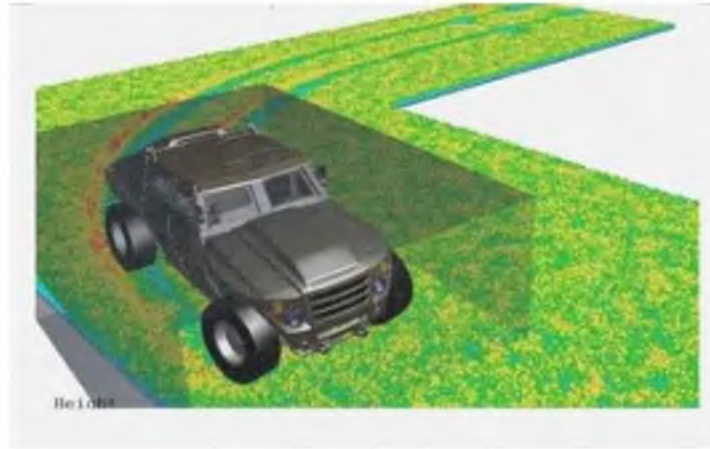


# APPLICATIONS FOR DEFENCE INDUSTRY

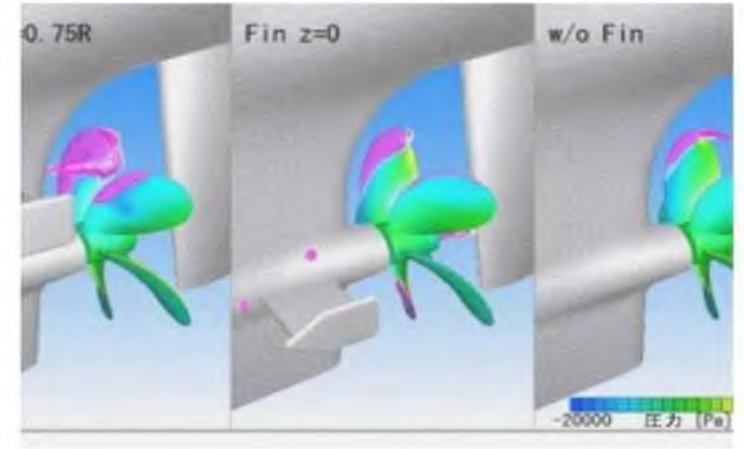
Air (Supersonic/Hypersonic)



Land (Vehicle on Sand/Mud)



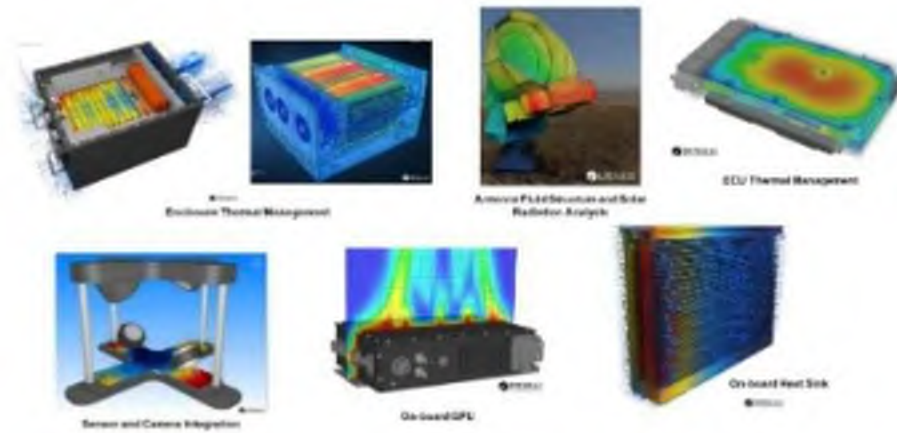
Maritime (Propeller/Hal)



## Thermal Management for Avionics



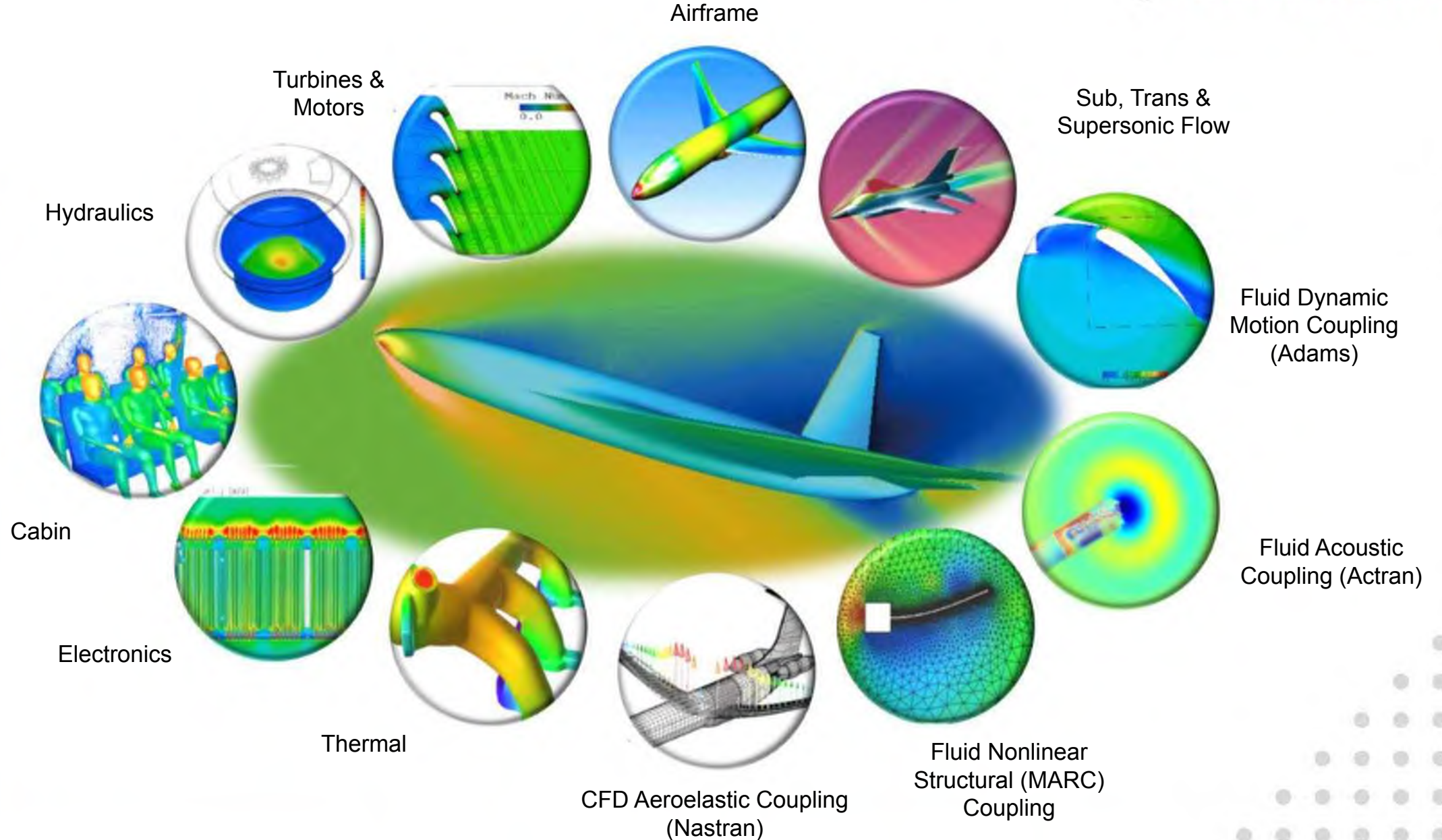
CRADLE CFD POWERED BY HEXAGON & MSC



- Aero-dynamics
- Aero-elasticity
- Aero-acoustics
- Abrasion
- Radio blackout
- Thermal management of EU/PU
- Production Quality Management
- Decarbonisation of military facilities
- Vehicle-dynamics
- Sand-dynamics
- Cavitation
- Hydro-dynamics

APPLICATIONS

# APPLICATIONS FOR AEROSPACE





# Case Studies

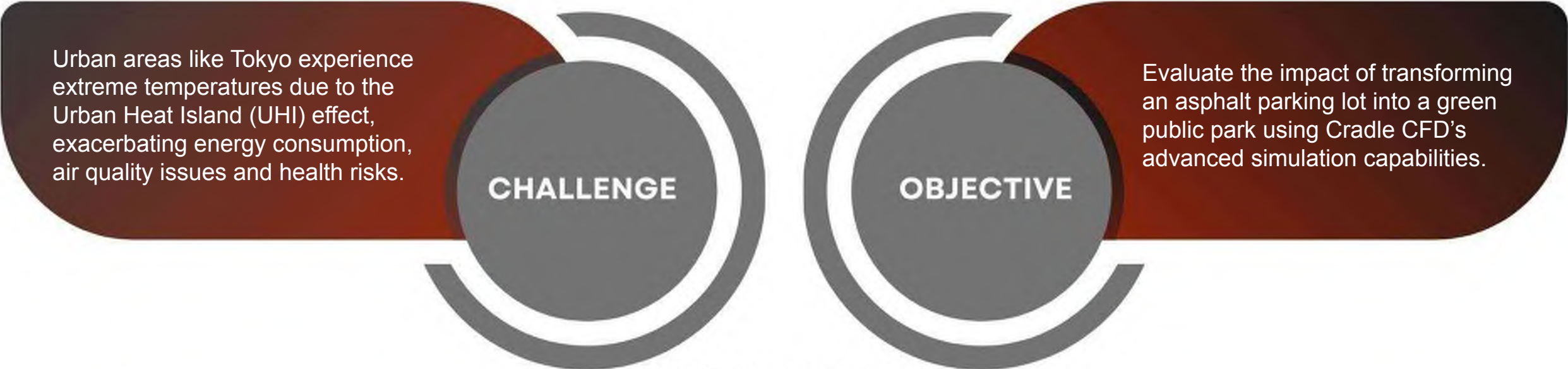
Discover how ADC's innovative approaches drive success across diverse industries



# DEMONSTRATING THE POWER OF CRADLE CFD IN URBAN HEAT ISLAND MITIGATION (1 of 2)



## Simulation of Green Infrastructure Transformation in Tokyo, Japan



### Simulation Overview

- Software:** Cradle CFD's scSTREAM module
- Conditions:** Realistic urban parameters, including solar radiation, wind, soil temperatures and latent heat from trees
- Complexity:** Over 50 million mesh elements for high-resolution analysis
- Time:** Approx. 14 hours for simulation



# DEMONSTRATING THE POWER OF CRADLE CFD IN URBAN HEAT ISLAND MITIGATION (2 of 2)



## Key Findings

### Surface Temperature Reduction

- Sunny areas: Up to **20°C** cooler
- Shaded areas: Up to **30°C** cooler

### Air Temperature Improvement

Lower surface temperatures led to significant air cooling, enhancing urban comfort levels

### Enhanced Ventilation

- Highlighted the critical role of airflow in dissipating heat
- Poor ventilation zones showed higher temperatures, stressing the importance of urban layouts facilitating natural air movement

### Material Insights

Vegetative surfaces showcased higher cooling efficiency due to transpiration and shading effects

## Practical Impact:

- **Policy Development:** Scientific basis for urban greening incentives
- **Urban Planning:** Guidance on optimal placement of green spaces to maximise cooling
- **Building Design:** Insights for incorporating reflective or heat-dissipative materials

## Conclusion

By leveraging Cradle CFD, urban planners and environmental engineers can identify actionable strategies to mitigate the UHI effect, creating cooler, healthier cities. This case underscores the transformative potential of combining CFD simulations with data-driven urban development initiatives.

## Collaborative Opportunities

With ADC bringing SCx Solutions and Cradle CFD expertise to new markets, we aim to empower diverse sectors like defense, urban planning and infrastructure development to tackle climate challenges proactively.



# SUCCESS STORY 1 – GOVERNMENT SECTOR



**Goal: Migrate over 120,000 employee records (Permanent and Casual) from the legacy Payroll system to the SAP Payroll platform.**

## Project Synopsis

### Current Situation:

- DoE relied on an internal shared service arrangement for HR/Payroll.
- Existing systems on the iSeries platform are stable but outdated and challenging to adapt.

### Objective:

- Priority: Migrate existing systems to a modern, supported platform.
- Aligns with the Business Reform Program's vision of 'Better Systems, Brighter Futures'

## ADC Solution

The data migration strategy involves implementing Informatica's Data Migration Workbench (DMW), known for its robust and highly scalable framework. Key features include an end-to-end migration process, flexibility for change, transparency in data movement, and active involvement of Business, Data Stewards, and key stakeholders. The migration scope encompasses transferring Permanent and Casual employee data from the legacy Payroll system (DB2, AS400) to the SAP Payroll platform, targeting 64,084 Casual and 108,473 Permanent employee records.

## Outcome

### Project Deliverables:

- Successful migration of 64,084 Casual and 108,473 Permanent employee records.
- Updated SAP Payroll platform.

### Alignment with Program Goals:

- Contribution to 'Better Systems, Brighter Futures.'
- Enhanced support for evolving work and industrial arrangements.

### Long-term Impact:

- Ensures longevity and adaptability of HR/Payroll transaction processing services.



# SUCCESS STORY 2 – HEALTH INSURANCE



Year: 2020

Client: Hospitals Contribution Fund, a private health insurer in Australia

Goal: Improving the brand's customer-centricity

## Project Synopsis

- **Platform Limitations:** Existing WHICS core lacked flexibility to support new goals.
- **Replacement Decision:** HCF initiated Core System Replacement Programme, selecting Civica's NewHealth.
- **CRM Transition:** Concurrently, HCF opted for Salesforce CRM to enhance customer experience.
- **Decommissioning:** Identified multiple systems/processes for decommissioning in routine operations.

## ADC Solution

ADC successfully managed complex data migration for HCF, considering system decommissioning and their intricate data landscape involving Mainframe, Microsoft, Java, and other technologies, encompassing decades of customer data.

## Methodology

- Migrated the customer data, PHI and Life data to Salesforce, NewHealth and OneOffice systems, respectively.
- Managed data quality and deduplication activities to ensure the client got access to a single source of truth.
- Minimised / addressed post-migration concerns through strong governance and thorough quality checkpoints.

## Outcome

- ADC successfully migrated all member data and met all data migration requirements for new platforms (NewHealth, OneOffice, Salesforce, MuleSoft and EWS)
- On-going data synch between Civica's NewHealth, OneOffice, Salesforce, MuleSoft and EWS was managed and delivered by ADC
- Data cleansing and quality assurance was established and executed as a part of the process
- Support data backup and business continuity initiatives

# SUCCESS STORY 3 – HEALTH INSURANCE



Year: 2021

Client: HBF Health, a private health insurer based in Perth, Australia

Goal: Migrating the HBF database to Civica

## Project Synopsis

- **Transformation Initiative:** HBF aimed to replace Highlight core with Civica New Health
- **Data Migration:** ADC was tasked with migrating HBF's data from Highlight to the new platform
- **Collaborative Coordination:** ADC closely collaborated with HBF's IT and Business teams, providing essential support and guidance for a smooth transition

## ADC Solution

- **Table & Column Mapping:** Define mappings for Highlight and Civica
- **Data Model & Behavior:** Examine data model and application behaviour
- **Data Quality & Cleansing:** Assess data quality for Highlight
- **Compatibility Check:** Verify source data compatibility
- **Automated Frameworks:** Implement metadata-driven frameworks
- **Power BI Dashboard:** Use for reconciliation. Post-Migration Insights: Gather insights for improvement

## Outcome

- **Successful Data Migration:** ADC met all migration requirements, moving data from Highlight (on-premise) to Civica (Cloud/Azure)
- **Data Quality Assurance:** Ensured data quality and compliance (PII, PHI) throughout the transformation
- **Reconciliation Visibility:** Utilised Power BI for transparent data reconciliation
- **Validation Excellence:** Conducted thorough validation of database entities and Civica applications with migrated data



# SUCCESS STORY 4 – HEALTH INSURANCE



Year: 2022

Client: Teachers Health, a health fund for educators and their families

Goal: Migrate from the legacy HAMBS database to Civica

## Project Synopsis

- As a part of a transformation programme, ADC was to aid the insurer's data migration process from the existing HAMBS solution to Civica Ensure.
- ADC to support / advise the client's IT and business teams in all aspects of data migration and implementation of the CIVICA Ensure platform.

## ADC Solution

- Analyse HAMBS and Civica to define table and column level mapping
- Examine data model / entity relationship / application behaviour for HAMBS and Civica
- Analyse data quality and cleansing requirements for HAMBS
- Adopt an automated metadata-driven framework for migration
- Select an automated metadata-driven framework for data quality / data profiling / reconciliation
- Power BI dashboard to show count / aggregations / record level reconciliation results

## Migration Scope – Ongoing Project

- Data migration from HAMBS (on-premise) to Civica (Cloud / Azure)
- Data cleansing and quality insurance
- Reconciliation observability using power BI dashboard
- Data compliances (PII, PHI)
- Functional and technical validation of various database entities and Civica application with migrated data
- **Successfully completed deployment trials for Phase 1 of the project that included migration for 194038 members**

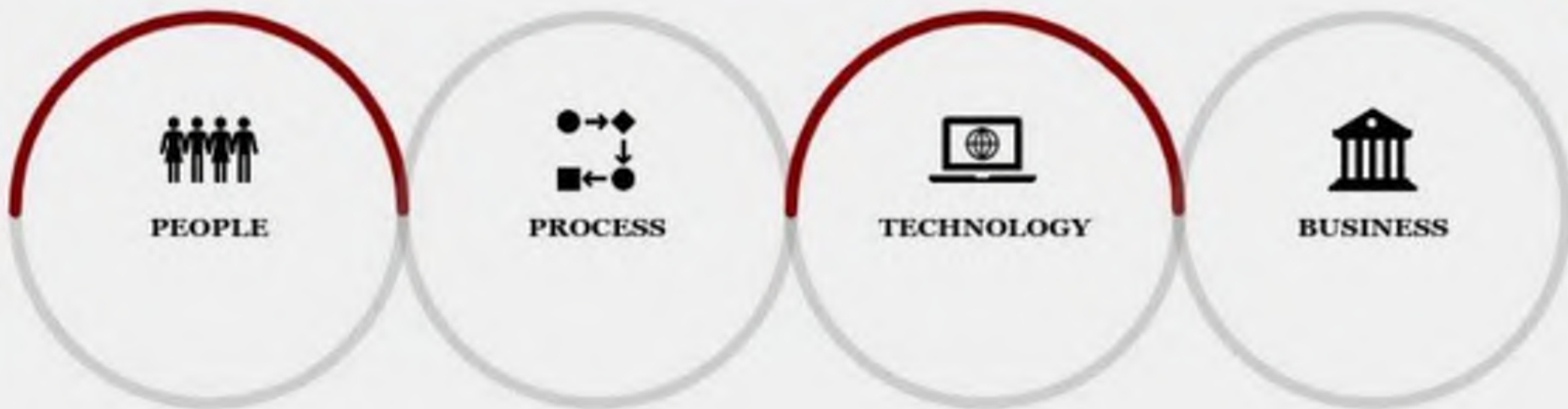
# OUR CLIENTS





# WE HELP OPTIMISE RELATIONSHIPS BETWEEN PEOPLE, PROCESSES AND TECHNOLOGY

The ADC approach reiterates the four pillars of transformation



SUSTAINED GROWTH  
\$36M

ADC  
TRANSFORMING  
BUSINESSES SINCE 2012

950\* STRONG GLOBAL  
RESOURCE POOL

• Dynamic figures



# Contact Us

## **SOUTH AUSTRALIA**

L 3, 169 Fullerton Road  
Victoria Park, Adelaide

## **VICTORIA**

Level 28, 303 Collin Street,  
Melbourne 3000

## **HEAD OFFICE**

Level 5, 616 Harris street, Ultimo,  
NSW, 2007, Australia  
Phone: 02-9274-8850

## **UAE**

Meydan Hotel,  
Nad Al Sheba 1 ,  
Dubai , United Arab Emirates

## **INDIA**

Ashok Vatika, Tower 2,  
102 Jaypee Greens,  
Greater NOIDA

## **SINGAPORE**

101 Thompson Road  
14-02/03 United Square,  
Singapore 307591